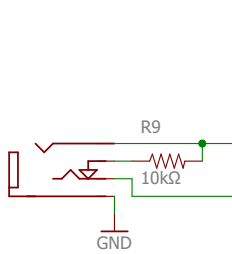
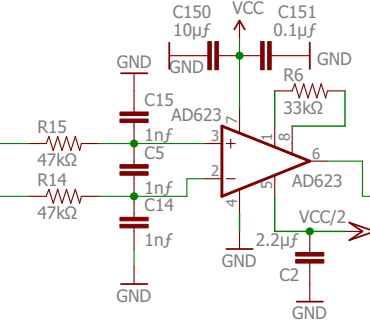


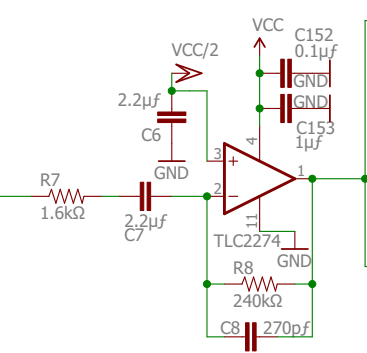
[A] INPUT



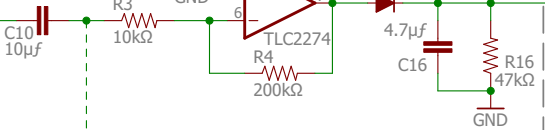
[B] Gain (4x)



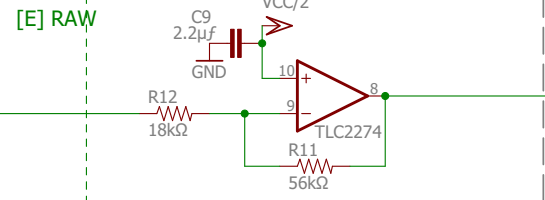
[C] Gain (150x) 50-2500Hz



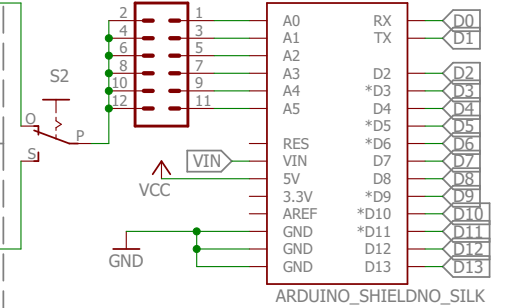
[D] Envelope



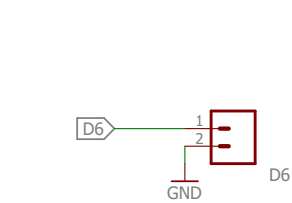
[E] RAW



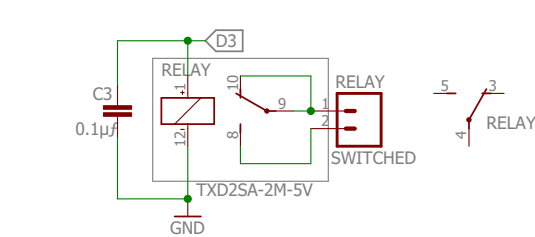
[F] Channel Select and Arduino Interface



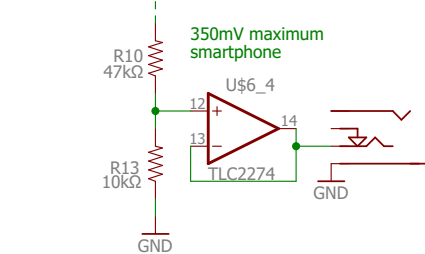
[H] AUX Port



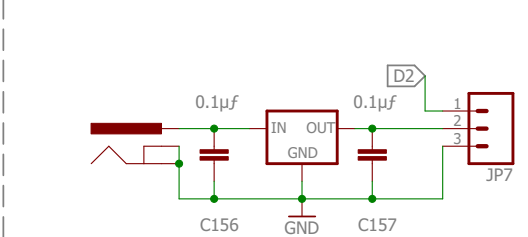
[I] Relay port HH Interface



[J] Divider and Buffer to Smartphone out



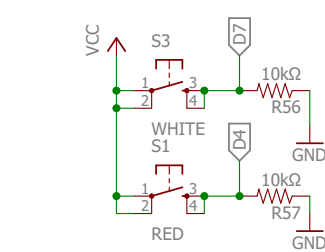
[K] Voltage Regulator for Claw/Hand



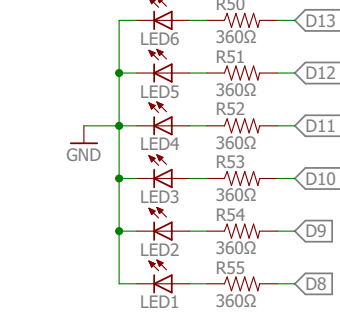
Backyard Brains  
Muscle Spikershield V2.6



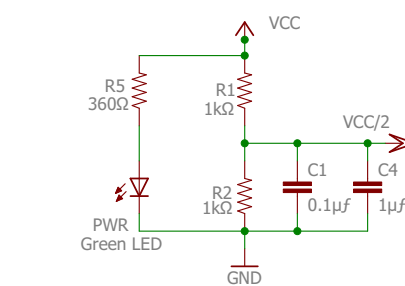
[L] Buttons



[M] LED out from Arduino



[N] Power LED, Vcc/2 with Decoupling



[O] NOTES

- Removed battery tester
- Added selection for 6th input
- Silkscreen changes
- Changed outline for larger switch